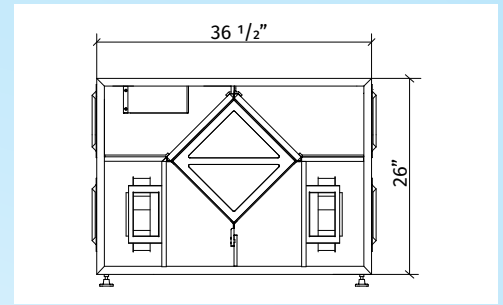


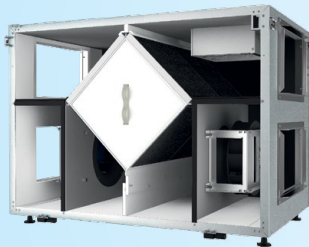
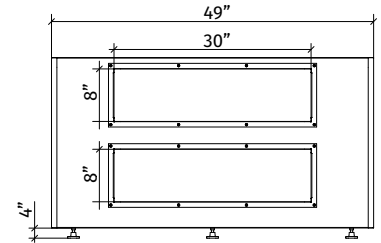
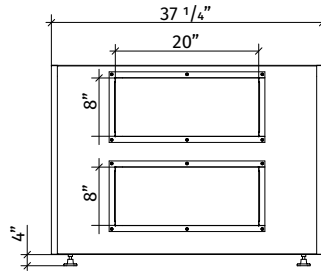
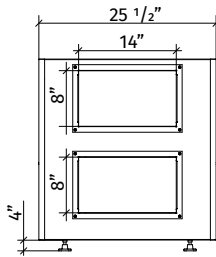
## BLAULITE ERV

Energy recovery ventilators  
for commercial applications

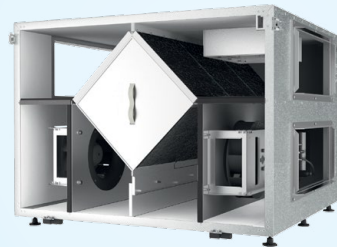
**BLAULITE** energy recovery ventilators are available in three sizes with one, two or three fans in array on both supply and exhaust sides. Units are specially designed for commercial applications.



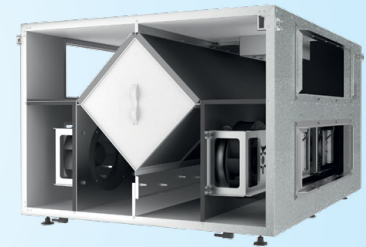
ERV 8 / ERV 17 / ERV 25



ERV 8



ERV 17



ERV 25

| Parameters                               | BLAULITE ERV 8 US          | BLAULITE ERV 17 US         | BLAULITE ERV 25 US         |
|--|----------------------------|----------------------------|----------------------------|
| Voltage [V / 60 Hz]                      | 1 ~ 120                    | 1 ~ 120                    | 1 ~ 120                    |
| Unit power [W]                           | 340                        | 680                        | 1020                       |
| Unit current [A]                         | 2.9                        | 5.8                        | 8.7                        |
| Sensible effectiveness @ max airflow [%] | 63                         | 60                         | 58                         |
| Air flow @ ESP 0.4" WG [cfm]             | 450                        | 840                        | 1200                       |
| Air flow max [cfm]                       | 520                        | 950                        | 1400                       |
| Transported air temperature [F]          | +5 up to +140              | +5 up to +140              | +5 up to +140              |
| Outer skin casing material               | galvanized steel, gauge 21 | galvanized steel, gauge 21 | galvanized steel, gauge 21 |
| Insulation                               | 1" styrofoam               | 1" styrofoam               | 1" styrofoam               |
| Connected air duct size [in]             | 8x14                       | 8x20                       | 8x30                       |

## CASING

Steel casing is covered with high quality multilayer aluminium and zinc alloy to prevent corrosion. The casing is equipped with a switch to turn the ventilator off when the service panel is opened. Service access from both left and right side.

## HEAT RECOVERY CORE

Enthalpic core provides both heat & humidity recovery. For enthalpic core no drain required.

## FANS

The unit is equipped with supply and exhaust centrifugal fans with backward curved blades and build-in thermal overheating protection with automatic restart. The electric motors and impellers are dynamically balanced.

## DEFROST SYSTEM

Fan stop defrost system is activated when the outdoor temperature falls below 23° F (-5° C).

## FILTER

Washable MERV 6 air filters in exhaust and supply air streams.

## CONTROL

The unit incorporates an integrated automation and control system with following functions:

- Operation mode switch.
- Airflow balancing enabled by supply and exhaust fan independent speed adjustment.
- Automatic recovery core frost protection.
- External control device connection.